



NOTE:-

- 1) CONTRACTOR TO FIELD VERIFY ALL EXISTING CONDITIONS PRIOR TO BEGINNING WORK. DRAWINGS ARE NOT TO BE SCALED, ALL DIMENSIONS SHOWN RELATING TO EXISTING CONSTRUCTION ARE APPROXIMATE (EXISTING WALLS MAY NOT BE PLUMB AND WALLS MAY NOT BE EXACTLY PARALLEL), THE CONTRACTOR SHALL FIELD VERIFY ALL ACTUAL DIMENSIONS AND CONTACT ARCHITECT TO ADDRESS ANY DISCREPANCIES, DIMENSIONS ARE NOT ADJUSTABLE WITHOUT APPROVAL OF THE ARCHITECT, UNLESS NOTED +/- OR VIF (VERIFY IN FIELD), EXACT LOCATIONS, DISTANCES, ELEVATIONS AND SIMILAR DATA SHALL BE GOVERNED BY ACTUAL FIELD CONDITIONS AND BY THE ARCHITECTS INSTRUCTIONS
- 2) IN THE EVENT OF CONFLICT BETWEEN INFORMATION SHOWN ON DRAWINGS AND INFORMATION SHOWN ON THE SPECIFICATIONS, THE MORE STRINGENT SHALL TAKE PRECEDENCE, SHOULD THE CONTRACTOR AT ANY TIME DISCOVER AN ERROR IN A DRAWING OR SPECIFICATION OR A DISCREPANCY OR VARIATION BETWEEN DIMENSIONS ON DRAWINGS AND MEASUREMENTS AT THE SITE OR LACK OF DIMENSIONS OR OTHER INFORMATION, THE GENERAL CONTRACTOR SHALL NOT PROCEED WITH THE WORK AFFECTED UNTIL THE ARCHITECT HAS BEEN NOTIFIED AND PROCEED ONLY AFTER CLARIFICATION HAS BEEN MADE
- 3) THIS DRAWING IN ALL FORMS ELECTRONIC OR HARD COPY IS EXCLUSIVE PROPERTY OF PAHWA ARCH-TECH SERVICES AND MUST NOT BE REPRODUCED IN WHOLE OR IN PART WITHOUT WRITTEN AUTHORIZATION

TENDER DRAWING

PROJECT:

PROPOSED INTERIOR WORK OF 27TH FLOOR OF GIFT ONE TOWER, GIFT CITY, GANDHI NAGAR, GUJRAT.

TITLE:

ELECTRICAL CEILING PLAN

DRAWN BY:-

KRISHNA SHARMA

CHECKED BY:

VIKRAM SINGH

APPROVED BY:-

AR.INDER PAL SINGH

REVISION DATES:

SCALE:-

SCALE TO FIT

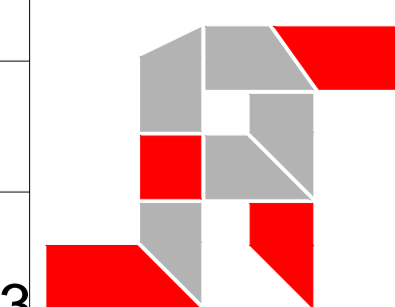
DATE:

17-07-2019

DRG. NO

BOB/AHMEDABAD/TENDER/ELE/03

(ARCHITECT)



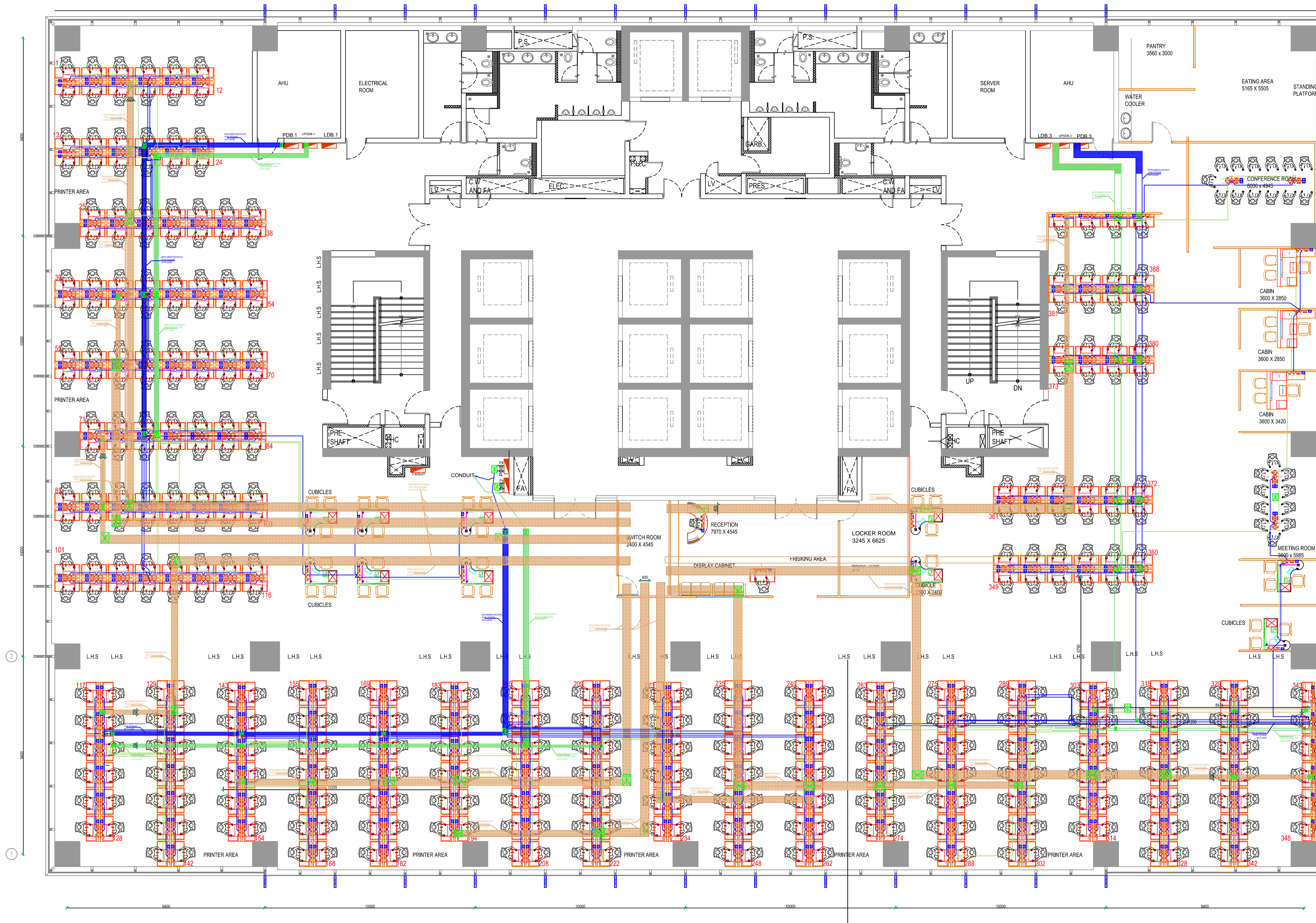
PAHWA ARCH-TECH SERVICES
 ARCHITECTS, ENGINEERS,
 INTERIOR DESIGNER, VALUER
 PLOT NO-53, BLOCK-A
 SECTOR-49,NOIDA PH: 0120-2571762

NOTE:-

1) CONTRACTOR TO FIELD VERIFY ALL EXISTING CONDITIONS PRIOR TO BEGINNING WORK. DRAWINGS ARE NOT TO BE SCALED, ALL DIMENSIONS SHOWN RELATING TO EXISTING CONSTRUCTION ARE APPROXIMATE (EXISTING WALLS MAY NOT BE PLUMB AND WALLS MAY NOT BE EXACTLY PARALLEL), THE CONTRACTOR SHALL FIELD VERIFY ALL ACTUAL DIMENSIONS AND CONTACT ARCHITECT TO ADDRESS ANY DISCREPANCIES, DIMENSIONS ARE NOT ADJUSTABLE WITHOUT APPROVAL OF THE ARCHITECT, UNLESS NOTED +/- OR VIF (VERIFY IN FIELD), EXACT LOCATIONS, DISTANCES, ELEVATIONS AND SIMILAR DATA SHALL BE GOVERNED BY ACTUAL FIELD CONDITIONS AND BY THE ARCHITECTS INSTRUCTIONS

2) IN THE EVENT OF CONFLICT BETWEEN INFORMATION SHOWN ON DRAWINGS AND INFORMATION SHOWN ON THE SPECIFICATIONS, THE MORE STRINGENT SHALL TAKE PRECEDENCE, SHOULD THE CONTRACTOR AT ANY TIME DISCOVER AN ERROR IN A DRAWING OR SPECIFICATION OR A DISCREPANCY OR VARIATION BETWEEN DIMENSIONS ON DRAWINGS AND MEASUREMENTS AT THE SITE OR LACK OF DIMENSIONS OR OTHER INFORMATION, THE GENERAL CONTRACTOR SHALL NOT PROCEED WITH THE WORK AFFECTED UNTIL THE ARCHITECT HAS BEEN NOTIFIED AND PROCEED ONLY AFTER CLARIFICATION HAS BEEN MADE

3) THIS DRAWING IN ALL FORMS ELECTRONIC OR HARD COPY IS EXCLUSIVE PROPERTY OF PAHWA ARCH-TECH SERVICES AND MUST NOT BE REPRODUCED IN WHOLE OR IN PART WITHOUT WRITTEN AUTHORIZATION




PRODUCED BY AN AUTODESK EDUCATIONAL PRODUCT

PRODUCED BY AN AUTODESK EDUCATIONAL PRODUCT

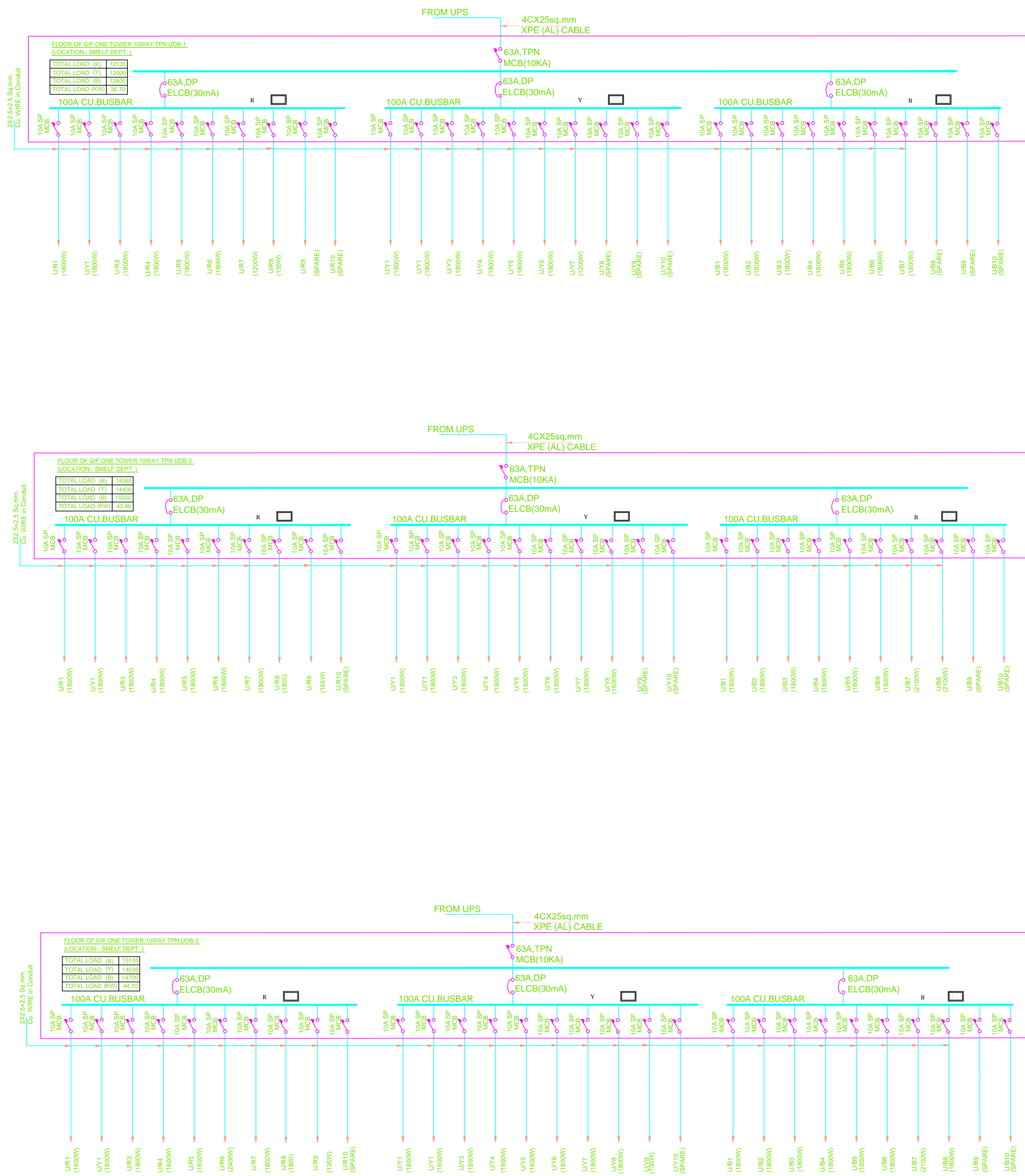
TENDER DRAWING

PROJECT: PROPOSED INTERIOR WORK OF 27TH FLOOR OF GIFT ONE TOWER, GIFT CITY, GANDHI NAGAR, GUJRAT.	TITLE: POWER/UPS/DATA/TELE/RACEWAY DRG.	CHECKED BY: VIKRAM SINGH	REVISION DATES:	DATE: 17-07-2019
	DRAWN BY:- KRISHNA SHARMA	APPROVED BY:- AR.INDER PAL SINGH	SCALE:- SCALE TO FIT	DRG. NO BOB/AHMEDABAD/TENDER/ELE/04

(ARCHITECT)



PAHWA ARCH-TECH SERVICES
ARCHITECTS, ENGINEERS,
INTERIOR DESIGNER, VALUER
PLOT NO-53, BLOCK-A
SECTOR-49,NOIDA PH: 0120-2571762



NOTE:-

1) CONTRACTOR TO FIELD VERIFY ALL EXISTING CONDITIONS PRIOR TO BEGINNING WORK. DRAWINGS ARE NOT TO BE SCALED, ALL DIMENSIONS SHOWN RELATING TO EXISTING CONSTRUCTION ARE APPROXIMATE (EXISTING WALLS MAY NOT BE PLUMB AND WALLS MAY NOT BE EXACTLY PARAWEL), THE CONTRACTOR SHALL FIELD VERIFY ALL ACTUAL DIMENSIONS AND CONTACT ARCHITECT TO ADDRESS ANY DISCREPANCIES, DIMENSIONS ARE NOT ADJUSTABLE WITHOUT APPROVAL OF THE ARCHITECT, UNLESS NOTED +/- OR VIF (VERIFY IN FIELD), EXACT LOCATIONS, DISTANCES, ELEVATIONS AND SIMILAR DATA SHALL BE GOVERNED BY ACTUAL FIELD CONDITIONS AND BY THE ARCHITECTS INSTRUCTIONS

2) IN THE EVENT OF CONFLICT BETWEEN INFORMATION SHOWN ON DRAWINGS AND INFORMATION SHOWN ON THE SPECIFICATIONS, THE MORE STRINGENT SHALL TAKE PRECEDENCE, SHOULD THE CONTRACTOR AT ANY TIME DISCOVER AN ERROR IN A DRAWING OR SPECIFICATION OR A DISCREPANCY OR VARIATION BETWEEN DIMENSIONS ON DRAWINGS AND MEASUREMENTS AT THE SITE OR LACK OF DIMENSIONS OR OTHER INFORMATION, THE GENERAL CONTRACTOR SHALL NOT PROCEED WITH THE WORK AFFECTED UNTIL THE ARCHITECT HAS BEEN NOTIFIED AND PROCEED ONLY AFTER CLARIFICATION HAS BEEN MADE

3) THIS DRAWING IN ALL FORMS ELECTRONIC OR HARD COPY IS EXCLUSIVE PROPERTY OF PAHWA ARCH-TECH SERVICES AND MUST NOT BE REPRODUCED IN WHOLE OR IN PART WITHOUT WRITTEN AUTHORIZATION

TENDER DRAWING

PROJECT:

PROPOSED INTERIOR WORK OF 27TH FLOOR OF GIFT ONE TOWER, GIFT CITY, GANDHI NAGAR, GUJRAT.

TITLE:

SLD DB DRAWING

DRAWN BY:-

KRISHNA SHARMA

CHECKED BY:

VIKRAM SINGH

APPROVED BY:-

AR.INDER PAL SINGH

REVISION DATES:

SCALE:-

SCALE TO FIT

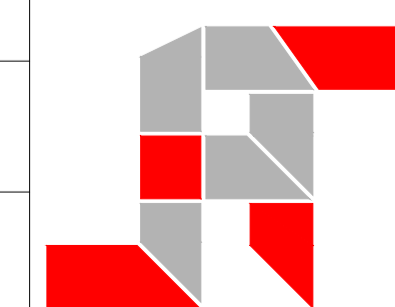
DATE:

17-07-2019

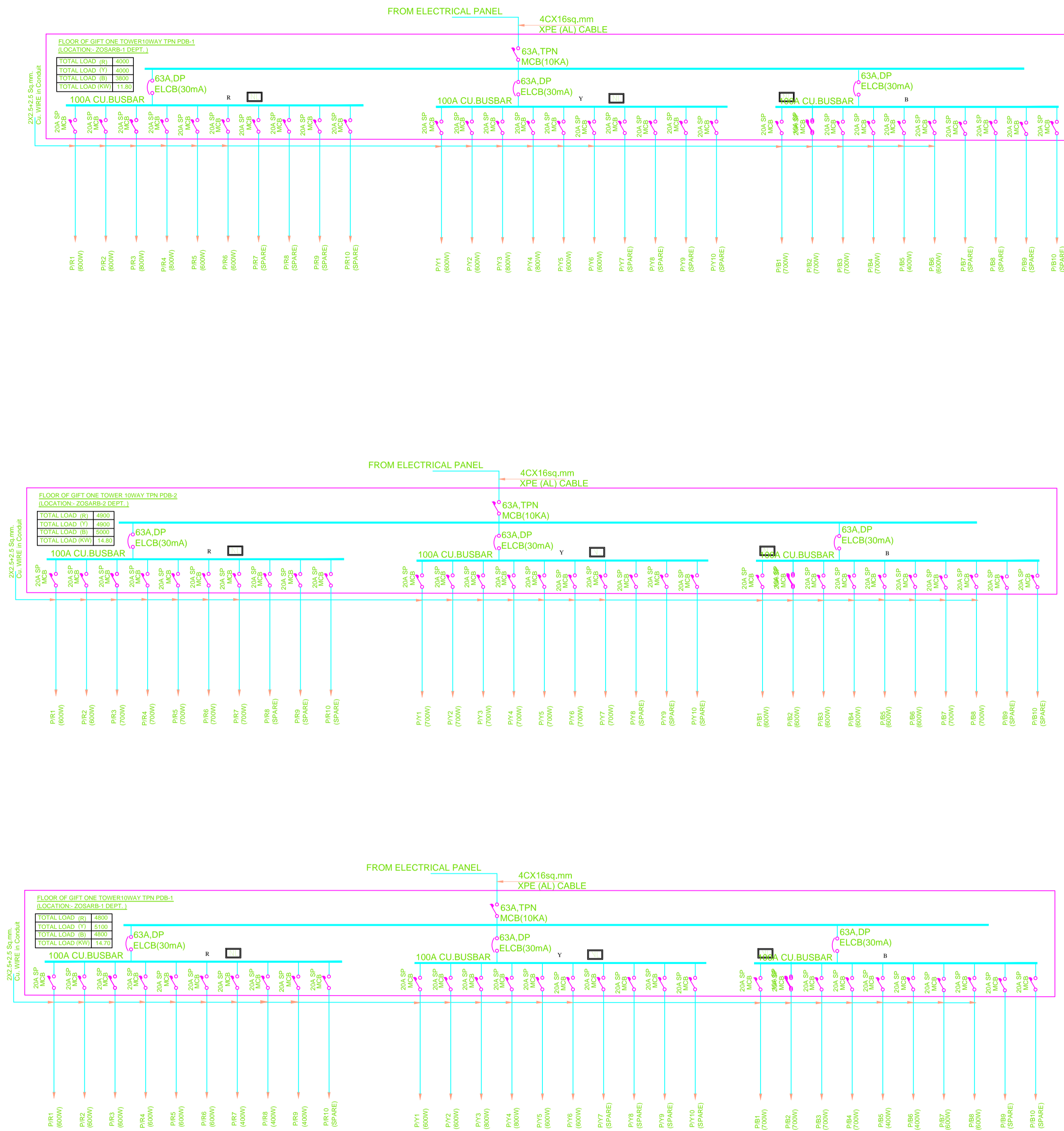
DRG. NO

BOB/AHMEDABAD/TENDER/SLD DB/01

(ARCHITECT)



PAHWA ARCH-TECH SERVICES
 ARCHITECTS, ENGINEERS,
 INTERIOR DESIGNER, VALUER
 PLOT NO-53, BLOCK-A
 SECTOR-49,NOIDA PH: 0120-2571762



NOTE:-

1) CONTRACTOR TO FIELD VERIFY ALL EXISTING CONDITIONS PRIOR TO BEGINNING WORK. DRAWINGS ARE NOT TO BE SCALED, ALL DIMENSIONS SHOWN RELATING TO EXISTING CONSTRUCTION ARE APPROXIMATE (EXISTING WALLS MAY NOT BE PLUMB AND WALLS MAY NOT BE EXACTLY PARALLEL), THE CONTRACTOR SHALL FIELD VERIFY ALL ACTUAL DIMENSIONS AND CONTACT ARCHITECT TO ADDRESS ANY DISCREPANCIES, DIMENSIONS ARE NOT ADJUSTABLE WITHOUT APPROVAL OF THE ARCHITECT, UNLESS NOTED +/- OR VIF (VERIFY IN FIELD), EXACT LOCATIONS, DISTANCES, ELEVATIONS AND SIMILAR DATA SHALL BE GOVERNED BY ACTUAL FIELD CONDITIONS AND BY THE ARCHITECTS INSTRUCTIONS

2) IN THE EVENT OF CONFLICT BETWEEN INFORMATION SHOWN ON DRAWINGS AND INFORMATION SHOWN ON THE SPECIFICATIONS, THE MORE STRINGENT SHALL TAKE PRECEDENCE, SHOULD THE CONTRACTOR AT ANY TIME DISCOVER AN ERROR IN A DRAWING OR SPECIFICATION OR A DISCREPANCY OR VARIATION BETWEEN DIMENSIONS ON DRAWINGS AND MEASUREMENTS AT THE SITE OR LACK OF DIMENSIONS OR OTHER INFORMATION, THE GENERAL CONTRACTOR SHALL NOT PROCEED WITH THE WORK AFFECTED UNTIL THE ARCHITECT HAS BEEN NOTIFIED AND PROCEED ONLY AFTER CLARIFICATION HAS BEEN MADE

3) THIS DRAWING IN ALL FORMS ELECTRONIC OR HARD COPY IS EXCLUSIVE PROPERTY OF PAHWA ARCH-TECH SERVICES AND MUST NOT BE REPRODUCED IN WHOLE OR IN PART WITHOUT WRITTEN AUTHORIZATION

TENDER DRAWING

PROJECT:

PROPOSED INTERIOR WORK OF 27TH FLOOR OF GIFT ONE TOWER, GIFT CITY, GANDHI NAGAR, GUJRAT.

TITLE:

SLD DB DRAWING

DRAWN BY:-

KRISHNA SHARMA

CHECKED BY:

VIKRAM SINGH

APPROVED BY:-

AR.INDER PAL SINGH

REVISION DATES:

SCALE:-

SCALE TO FIT

DATE:

17-07-2019

DRG. NO

BOB/AHMEDABAD/TENDER/SLD DB/02

(ARCHITECT)



PAHWA ARCH-TECH SERVICES
 ARCHITECTS, ENGINEERS,
 INTERIOR DESIGNER, VALUER
 PLOT NO-53, BLOCK-A
 SECTOR-49,NOIDA PH: 0120-2571762